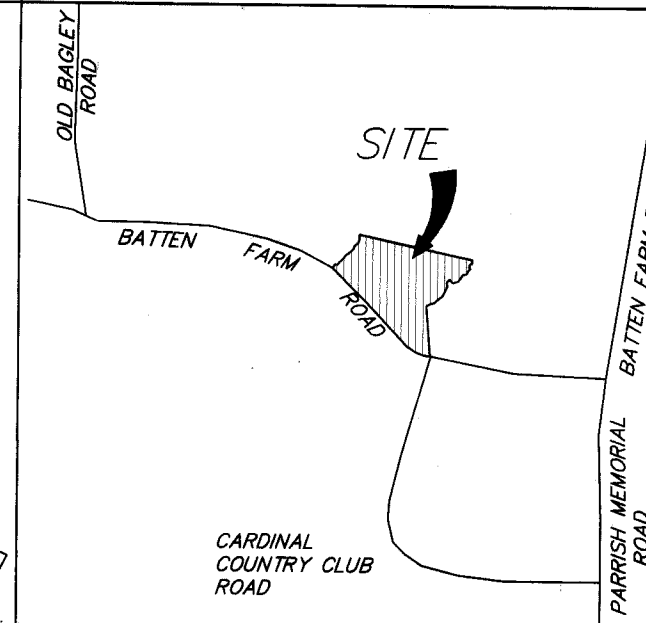


STATE OF NORTH CAROLINA, Johnston COUNTY
 FILED FOR REGISTRATION AT 3:25:23 P. M.
April 22, 2020, IN THE
 REGISTER OF DEEDS OFFICE.
 RECORDED IN BOOK 91, PAGE 19
Craig REGISTER OF DEEDS, BY Carol DEPUTY

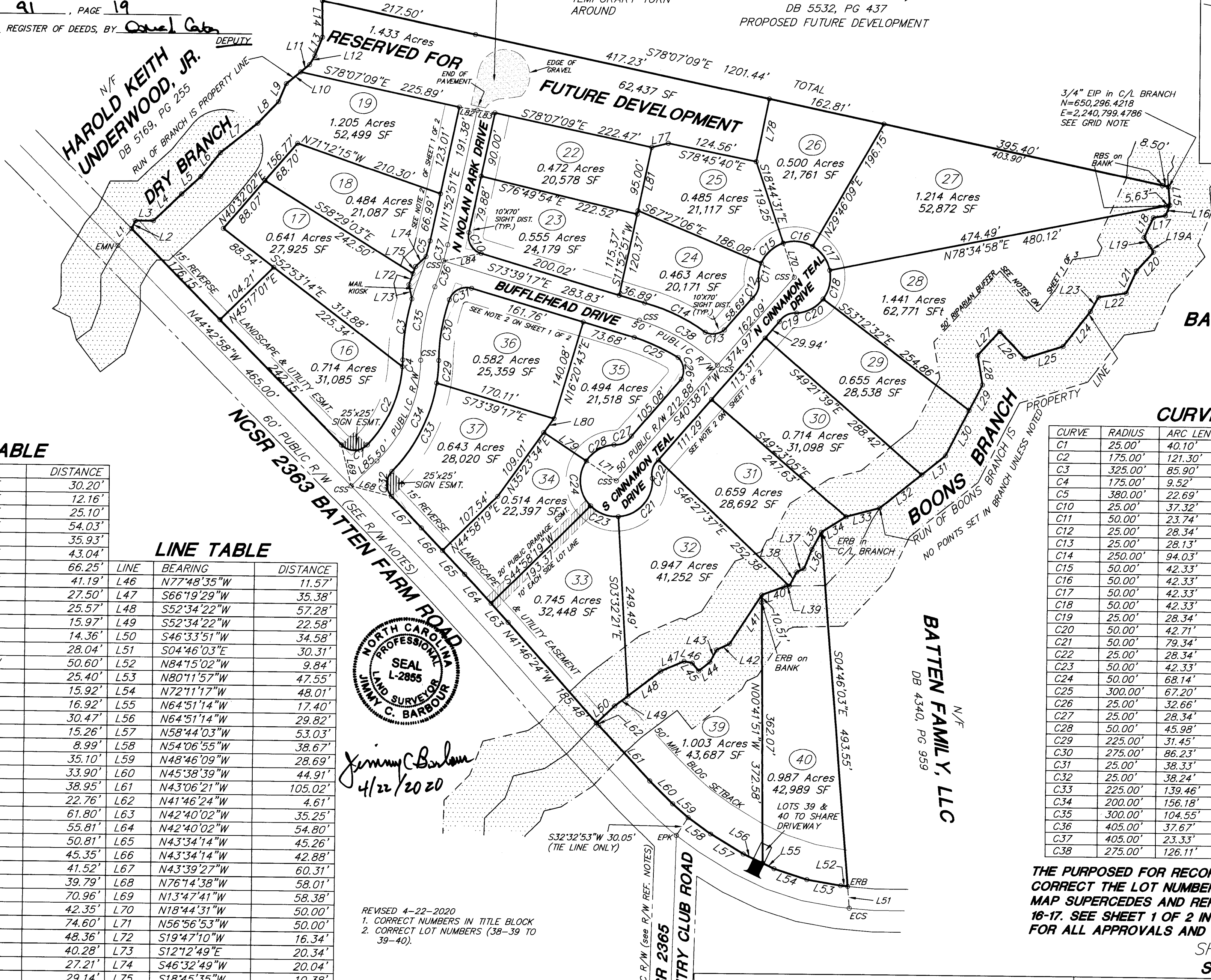
ERB in C/L BRANCH
 N=650,543.7703
 E=2,239,623.7804
 SEE GRID NOTE

N/F
RRT DEVELOPMENT, LLC
 DB 5532, PG 437
 PROPOSED FUTURE DEVELOPMENT



GRID NOTE
 GRID NORTH
 NCGS VRS
 NAD 1983 (2011)
 GEOID 12 A
 COMBINED FACTOR=0.99988154

N/F
HAROLD KEITH UNDERWOOD, JR.
 DB 5169, PG 255
 RUN OF BRANCH IS PROPERTY LINE



VICINITY MAP - NO SCALE

N/F
BATTEN FAMILY, LLC
 DB 4340, PG 959

LINE TABLE

LINE	BEARING	DISTANCE
L1	N38°50'39"E	30.20'
L2	N24°42'54"E	12.16'
L3	N89°20'49"E	25.10'
L4	N46°02'23"E	54.03'
L5	N47°22'01"E	35.93'
L6	N38°42'02"E	43.04'
L7	N51°18'06"E	66.25'
L8	N43°30'03"E	41.19'
L9	N22°28'21"E	27.50'
L10	N50°11'15"E	25.57'
L11	N50°11'10"E	15.97'
L12	N30°47'41"E	14.36'
L13	N21°45'21"E	28.04'
L14	N00°38'26"W	50.60'
L15	S04°46'46"E	25.40'
L16	S21°40'21"W	15.92'
L17	S80°33'14"W	16.92'
L18	S24°30'13"W	30.47'
L19	S33°17'46"E	15.26'
L19A	S32°33'22"E	8.99'
L20	S41°37'41"W	35.10'
L21	S24°00'37"W	33.90'
L22	S81°06'25"W	38.95'
L23	S29°02'55"W	22.76'
L24	S37°13'57"W	61.80'
L25	S72°18'50"W	55.81'
L26	N43°05'12"W	50.81'
L27	S42°14'44"W	45.35'
L28	S09°41'00"E	41.52'
L29	S26°55'37"W	39.79'
L30	S26°55'33"W	70.96'
L31	S50°55'53"W	42.35'
L32	S50°55'53"W	74.60'
L33	S75°14'18"W	48.36'
L34	S57°26'21"W	40.28'
L35	S28°07'25"W	27.21'
L36	S21°45'23"W	29.14'
L37	S65°27'28"W	10.98'
L38	S26°39'42"W	22.17'
L39	S87°04'45"W	4.72'
L40	S69°31'22"W	35.59'
L41	S32°56'42"W	81.14'
L42	S64°19'12"W	19.68'
L43	S28°24'26"W	19.25'
L44	S50°46'41"W	20.11'
L45	N38°33'24"W	14.14'

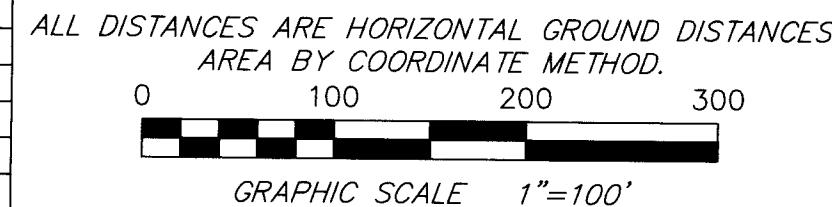
LINE TABLE

LINE	BEARING	DISTANCE
L46	N77°48'35"W	11.57'
L47	S66°19'29"W	35.38'
L48	S52°34'22"W	57.28'
L49	S52°34'22"W	22.58'
L50	S46°33'51"W	34.58'
L51	S04°46'03"E	30.31'
L52	N84°15'02"W	9.84'
L53	N80°11'57"W	47.55'
L54	N72°11'17"W	48.01'
L55	N64°51'14"W	17.40'
L56	N64°51'14"W	29.82'
L57	N58°44'03"W	53.03'
L58	N54°06'55"W	38.67'
L59	N48°46'09"W	28.69'
L60	N45°38'39"W	44.91'
L61	N43°06'21"W	105.02'
L62	N41°46'24"W	4.61'
L63	N42°40'02"W	35.25'
L64	N42°40'02"W	54.80'
L65	N43°34'14"W	45.26'
L66	N43°34'14"W	42.88'
L67	N43°39'27"W	60.31'
L68	N76°14'38"W	58.01'
L69	N13°47'41"W	58.38'
L70	N18°44'31"W	50.00'
L71	N56°56'53"W	50.00'
L72	S19°47'10"W	16.34'
L73	S12°12'49"E	20.34'
L74	S46°32'49"W	20.04'
L75	S18°45'35"W	10.38'
L77	S75°47'59"W	23.60'
L78	S11°14'16"W	88.64'
L79	S56°56'53"E	70.74'
L80	S35°23'34"W	23.96'
L81	N11°52'51"E	90.00'
L82	S81°16'34"E	25.04'
L83	S81°16'34"E	25.04'
L84	N78°17'48"E	53.17'
L85	N45°17'01"E	50.00'



Jimmy C. Barbour
 4/22/2020

REVISED 4-22-2020
 1. CORRECT NUMBERS IN TITLE BLOCK
 2. CORRECT LOT NUMBERS (38-39 TO 39-40).



CURVE DATA TABLE

CURVE	RADIUS	ARC LENGTH	CHORD LENGTH	CHORD BEARING
C1	25.00'	40.10'	35.94'	N89°19'42"E
C2	175.00'	121.30'	118.88'	N23°30'59"E
C3	325.00'	85.90'	85.65'	S08°06'50"W
C4	175.00'	9.52'	9.52'	N02°06'02"E
C5	380.00'	22.69'	22.68'	N13°35'29"E
C10	25.00'	37.32'	33.95'	S30°53'13"E
C11	50.00'	23.74'	23.52'	S09°08'37"W
C12	25.00'	28.34'	26.84'	N18°05'23"E
C13	25.00'	28.13'	26.67'	N82°27'17"E
C14	250.00'	94.03'	93.47'	N64°41'32"W
C15	50.00'	42.33'	41.08'	S47°00'09"W
C16	50.00'	42.33'	41.08'	N84°29'11"W
C17	50.00'	42.33'	41.08'	N35°58'31"W
C18	50.00'	42.33'	41.08'	N12°32'08"E
C19	25.00'	28.34'	26.84'	S18°06'17"W
C20	50.00'	42.71'	41.43'	N61°15'53"E
C21	50.00'	79.34'	71.28'	N41°00'02"E
C22	25.00'	28.34'	26.85'	S18°06'17"W
C23	50.00'	42.33'	41.08'	S69°17'01"E
C24	50.00'	68.14'	62.99'	S05°59'17"E
C25	300.00'	67.20'	67.06'	N65°56'49"W
C26	25.00'	32.66'	30.39'	N08°48'00"W
C27	25.00'	28.34'	26.84'	N63°11'19"E
C28	50.00'	45.98'	44.37'	S59°23'42"W
C29	225.00'	31.45'	31.42'	N04°32'44"E
C30	275.00'	86.23'	85.87'	S09°31'28"W
C31	25.00'	38.33'	34.68'	S62°25'34"W
C32	25.00'	38.24'	34.62'	S00°14'46"W
C33	225.00'	139.46'	137.24'	N26°18'21"E
C34	200.00'	156.18'	152.24'	N22°54'46"E
C35	300.00'	104.55'	104.03'	S10°31'34"W
C36	405.00'	37.67'	37.65'	N17°50'45"E
C37	405.00'	23.33'	23.33'	N13°31'52"E
C38	275.00'	126.11'	125.00'	N60°31'03"W

THE PURPOSE FOR RECORDING THIS PLAT IS TO CORRECT THE LOT NUMBERS ON THE MAP. THIS MAP SUPERCEDES AND REPLACES PLAT BOOK 91, PAGES 16-17. SEE SHEET 1 OF 2 IN PB 90, PGS 387-388 FOR ALL APPROVALS AND SIGNATURES.

SHEET 2 OF 2
 SURVEY FOR

JIMMY BARBOUR SURVEYING, PA
 JIMMY C. BARBOUR, PLS, GSI
 C-3109
 213 S. SECOND STREET
 P. O. BOX 28
 SMITHFIELD, N.C. 27577
 919 989-6642 919-989-3013
 Email: jimmy@jbsurveying.com

OWNER N/F RRT DEVELOPMENT, LLC			
TOWNSHIP	MICRO	COUNTY	JOHNSTON
STATE	NC		
SURVEYED BY	JS	DRAWN BY	CINDA S LASSITER
DATE SURVEYED	3-2020	SCALE	1"=100'
DRAWING NO.		18-233	