

VICINITY MAP (NOT TO SCALE)

CERTIFICATE OF OWNERSHIP AND DEDICATION

I HEREBY CERTIFY THAT I AM THE OWNER OF THE PROPERTY SHOWN HEREON, WHICH IS LOCATED IN THE COUNTY OF JOHNSTON, NORTH CAROLINA, AND THAT I HEREBY DOOT THIS SUBDIVISION PLAN WITH MY FREE CONSENT, AND I HEREBY AGREE TO GRANT ALL EASEMENTS TO PUBLIC OR PRIVATE USE AS NOTED.

DATE: 10/23/17

OWNER: [Signature]

PROPERTY SHOWN HEREON IS XXXX IS NOT FEMA FLOOD HAZARD PANEL NO. 3720R16200 J EFFECTIVE DATE: DECEMBER 2, 2005

THIS SURVEY CREATES A SUBDIVISION OF LAND WITHIN THE AREA OF A COUNTY OR MUNICIPALITY THAT HAS AN ORDINANCE THAT REGULATES PARCELS OF LAND.

DATE: 10/23/17

SUBJECT: [Signature]

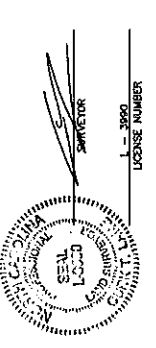
SURVEYOR'S DISCLAIMER: NO ATTEMPT WAS MADE TO LOCATE ANY CHANGES, WELANDS, HAZARDOUS MATERIAL SITES, UNDERGROUND UTILITIES OR ANY OTHER FEATURES ABOVE OR BELOW GROUND OTHER THAN THOSE SHOWN.

DATE: 10/23/17

SURVEYOR: [Signature]

STATE OF NORTH CAROLINA, JOHNSTON COUNTY

I, [Signature], DO HEREBY CERTIFY THAT THIS SURVEY WAS MADE IN ACCORDANCE WITH THE ACTUAL SURVEY MADE UNDER MY SUPERVISION (SEE DESCRIPTION RECORDED IN BOOK 5015, PAGE 364). EACH OF THE BOUNDARIES NOT SURVEYED ARE CLEARLY SHOWN AS CALCULATED IS TO THE RATIO OF PRECISION AS CALCULATED IS 1:10,000. THAT THE PRECISION OF THIS SURVEY IS IN ACCORDANCE WITH THE STANDARDS PART 2, STANDARDS FOR GEODETIC NETWORKS AT 1 CENTIMETER ACCURACY CLASSIFICATION (95% CONFIDENCE) AND THE STANDARDS PART 3, STANDARDS FOR SURVEYING ACCURACY WITH G.S. 47-30 AS AMENDED, THAT THIS PLAN MEETS THE REQUIREMENT OF G.S. 47-30 SECTION F-11. I, [Signature], WITNESS MY ORIGINAL SIGNATURE AND SEAL THIS 23rd DAY OF OCTOBER, A.D. 2017.



CERTIFICATE OF PRELIMINARY APPROVAL OF WATER SUPPLY AND SEWAGE DISPOSAL SYSTEMS INSTALLED OR PROPOSED FOR USE IN CONNECTION WITH ANY PUBLIC HEALTH REQUIREMENTS AS DESCRIBED IN APPENDIX A OF THE JOHNSTON COUNTY SUBDIVISION REGULATIONS. FINAL APPROVAL OF THIS SUBDIVISION PLAN WILL BE BASED ON THE RESULTS OF A FIELD INSPECTION OF THE PROPOSED SEWAGE DISPOSAL SYSTEMS. THIS PRELIMINARY CERTIFICATION IS ADVISORY ONLY AND CONFERS NO GUARANTEE.

DATE: 10/23/17

COUNTY HEALTH OFFICER OR AUTHORIZED REP.: [Signature]

NOTE: EACH LOT SHOWN HEREON MAY REQUIRE THE USE OF SEWAGE PUMP-OUT PRESSURE PIPE SYSTEMS, INNOVATIVE SYSTEMS OR ANY OTHER ALTERNATIVE SYSTEM TYPE AND SITE MODIFICATIONS SPECIFIED IN THE ACTUAL SYSTEM TYPE, DESIGN AND SITE MODIFICATIONS WILL BE DETERMINED AT THE TIME OF PERMITTING.

NOTE: NO STRUCTURES TO BE BUILT NEAR ANY UTILITY EASEMENTS. ALL EASEMENTS ARE TO BE MAINTAINED AND NOT ALTERED FOR THE PURPOSES OF RECORDING THE SUBDIVISION MAP.

NOTE: LS-111 ARE THE LINES ONLY

I HEREBY CERTIFY THAT THIS RECORD PLAN HAS BEEN FOUND TO COMPLY WITH THE SUBDIVISION ORDINANCE OF JOHNSTON COUNTY, NORTH CAROLINA, AND THAT IT HAS BEEN APPROVED FOR RECORDING IN THE REGISTER OF DEEDS OF JOHNSTON COUNTY.

DATE: 10/23/17

SUBDIVISION ADMINISTRATOR: [Signature]

RESERVED FOR FUTURE DEVELOPMENT

STEEL BRIDGE CROSSING, LLC. PORTION OF DB 5015 PG 964 PN 130030488 3712

RESERVED FOR FUTURE DEVELOPMENT

STEEL BRIDGE CROSSING, LLC. PORTION OF DB 5015 PG 964 PN 130030488 3712

RESERVED FOR FUTURE DEVELOPMENT

STEEL BRIDGE CROSSING, LLC. PORTION OF DB 5015 PG 964 PN 130030488 3712

LEGEND

1) ALL DISTANCES SHOWN ARE HORIZONTAL GROUND DISTANCES

2) AREAS COMPUTED BY COORDINATE METHOD

3) PROPERTY SUBJECT TO ALL EASEMENTS AND RESTRICTIONS OF RECORD

4) NO. 5 REBAR IRON STAKES SET AT ALL LOT CORNERS UNLESS OTHERWISE NOTED

5) ALL INTERIOR LOT LINES SHALL HAVE A 20' DRAINAGE AND UTILITY EASEMENT, 10' EACH SIDE OF ALL LOT LINES INSIDE OF ALL EXTERIOR BOUNDARY LINES SHALL BE 10' WIDE GRASSING, SLOPE, DRAINAGE AND UTILITY EASEMENT IS RESERVED ON THE LOT SIDE OF AND INSIDE OF ALL EXTERIOR BOUNDARY LINES

6) GRID TIE BY GPS

7) ZONING: AR

8) PIN NO. 102500-44-1267

9) PROJECT TRACT DEED DB 5015 PG 964

REFERENCES:

DB 1972 PG 532 PB 84 PG 141

DB 1972 PG 528 PB 37 PG 9

DB 1000 PG 272

DB 5015 PG 964

LINE	BEARING	DISTANCE
L1	N71°06'38"W	58.47'
L2	N71°06'38"W	70.23'
L3	S11°47'56"E	70.23'
L4	S14°50'44"W	1.45'
L5	N14°30'44"E	60.13'
L6	S81°58'23"E	50.00'
L7	S81°58'23"E	50.00'
L8	S85°38'40"E	49.90'
L9	S85°12'10"E	49.90'
L10	S84°04'08"E	49.95'
L11	S15°15'51"E	29.93'
L12	S15°15'51"E	1.54'
L13	S15°13'51"W	1.54'
L14	S76°48'23"E	49.64'
L15	S81°36'57"E	52.52'
L16	S85°38'40"E	49.95'
L17	S85°38'40"E	49.95'
L18	S86°11'58"E	49.57'
L19	S84°04'08"E	49.52'
L20	S81°07'05"E	47.54'
L21	S79°27'57"E	47.57'
L22	S71°33'54"E	10.83'
L23	S71°33'54"E	10.83'
L24	N16°27'26"E	60.00'
L25	S71°33'54"E	20.51'
L26	N14°40'44"E	70.26'
L27	N75°10'16"W	22.00'
L28	S14°49'44"W	71.16'
L29	N71°32'54"E	62.57'
L30	S71°32'54"E	60.00'
L31	N15°17'37"E	80.00'
L32	S15°17'37"E	80.00'
L33	S15°10'16"E	119.23'
L34	S15°49'44"W	60.00'

REVIEW OFFICER'S CERTIFICATE

I, [Signature], REVIEW OFFICER OF JOHNSTON COUNTY, CERTIFY THAT THE MAP OR PLAN TO WHICH THIS CERTIFICATION IS APPLIED MEETS ALL STATUTORY REQUIREMENTS FOR RECORDING.

DATE: 10/23/17

REVIEW OFFICER: [Signature]

STATE OF NORTH CAROLINA, JOHNSTON COUNTY

THIS INSTRUMENT WAS PRESENTED FOR REGISTRATION AND RECORDING THIS 23rd DAY OF OCTOBER, 2017 AT 10:02 P.M.

CLERK DUKE: [Signature]

REGISTER OF DEEDS: [Signature]

RECORDED IN PB 85 PG 446

TRUE LINE SURVEYING, P.C.

205 WEST MAIN STREET
CLAYTON, N.C. 27520
TELEPHONE: (919) 359-0427
FAX: (919) 359-0428
WWW.TRUELINESURVEYING.COM

REGISTERED PROFESSIONAL SURVEYOR

STATE OF NORTH CAROLINA

NO. 122-405

WILLOW RIDGE

PLEASANT GROVE TOWNSHIP, JOHNSTON COUNTY
NORTH CAROLINA
OCTOBER 25, 2017

OWNER: STEEL BRIDGE CROSSING, LLC.
5160 NC HWY 42 W
CARNER, N.C. 27529

OWNER: STEEL BRIDGE CROSSING, LLC.
5160 NC HWY 42 W
CARNER, N.C. 27529

NC GRID NORTH AND 45/1011

NC GRID COORDINATES
N 850024.6687
E 212484.3154

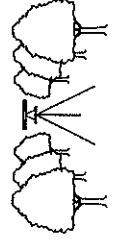
N/F
ATLEE ROBERTS
DB 4707 PG 883
PN 13003053

OWNER: STEEL BRIDGE CROSSING, LLC.
5180 NC HWY 42 W
GARRETT, N.C. 27528

WILLOW RIDGE PHASE TWO

PLEASANT GROVE TOWNSHIP, JOHNSTON COUNTY
NORTH CAROLINA
APRIL 30, 2018
SHEET 2 OF 2

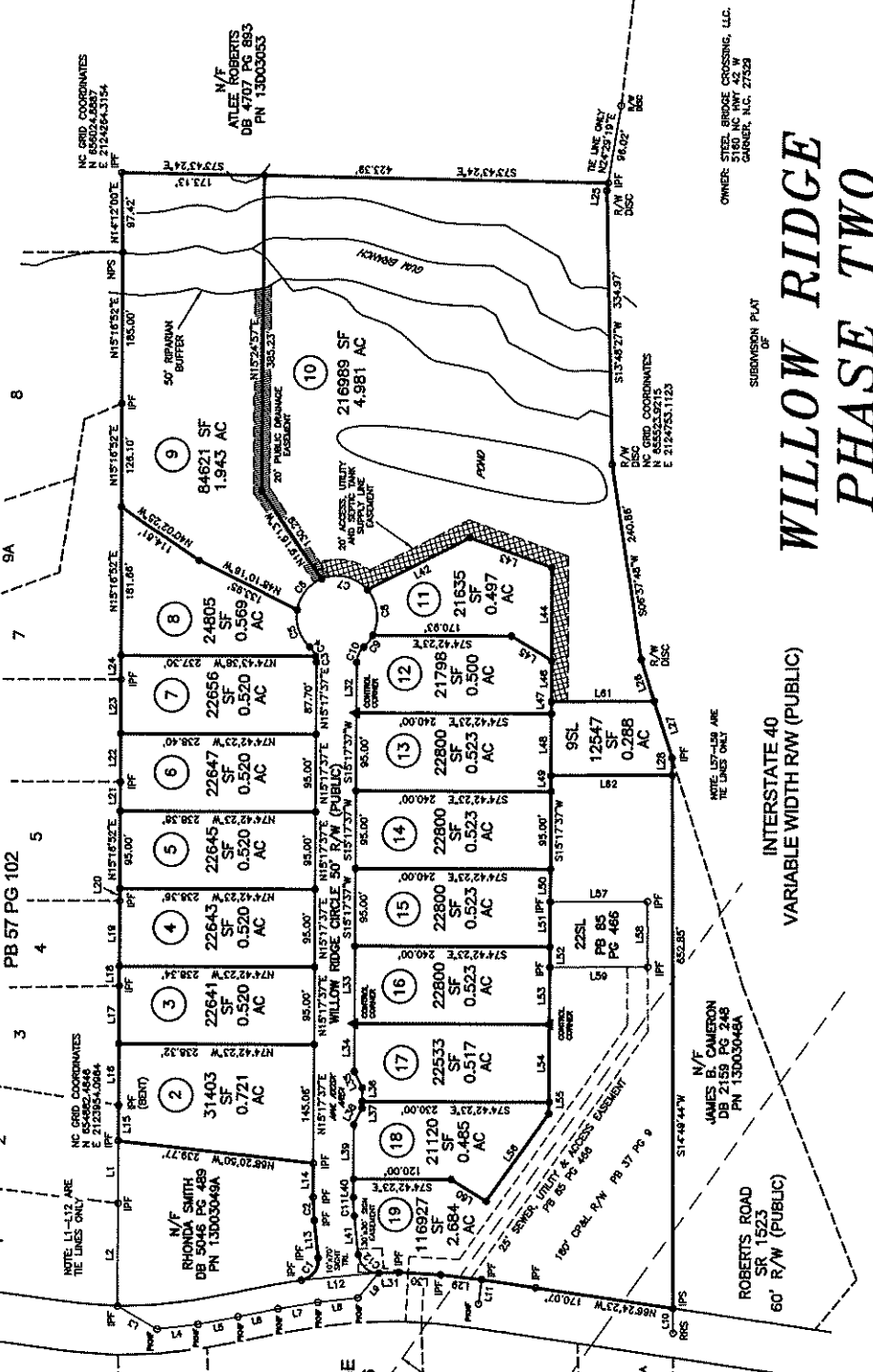
TRUE LINE SURVEYING, P.C.



205 WEST MAIN STREET
CLAYTON, N.C. 27520
TELEPHONE: (919) 359-0427
FAX: (919) 359-0428
www.truelinesurveying.com

C-1859

CURVE	RADIUS	ARC LENGTH	CHORD LENGTH	CHORD BEARING
C1	25.00'	37.88'	34.43'	N82°24'23"E
C2	255.00'	28.54'	28.52'	N17°05'16"E
C3	255.00'	17.47'	17.47'	N09°24'11"E
C4	50.00'	56.32'	48.05'	N04°10'53"W
C5	50.00'	56.32'	48.05'	N85°27'52"E
C6	50.00'	60.06'	58.16'	S81°42'35"E
C7	50.00'	34.88'	34.88'	S09°09'29"W
C8	50.00'	21.03'	20.41'	S30°23'18"W
C9	205.00'	22.84'	22.83'	S12°05'18"W
C10	205.00'	37.24'	33.89'	S53°47'31"E



MAXIMUM IMPERVIOUS SURFACE AREA SHALL NOT EXCEED 7000 SQUARE FEET PER LOT

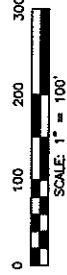
ROBERTS RIDGE SUBDIVISION
PB 57 PG 102

ROBERTS ROAD
SR 1523
60' R/W (PUBLIC)

WILLOW RIDGE
PB 85 PG 486

INTERSTATE 40
VARIABLE WIDTH RW (PUBLIC)

ROBERTS ROAD
SR 1523
60' R/W (PUBLIC)



LEGEND

- 1/4" IRON PIN
- 1/2" IRON PIN
- 3/4" IRON PIN
- 1" IRON PIN
- 1 1/2" IRON PIN
- 2" IRON PIN
- 3" IRON PIN
- 4" IRON PIN
- 6" IRON PIN
- 8" IRON PIN
- 10" IRON PIN
- 12" IRON PIN
- 14" IRON PIN
- 16" IRON PIN
- 18" IRON PIN
- 20" IRON PIN
- 24" IRON PIN
- 30" IRON PIN
- 36" IRON PIN
- 42" IRON PIN
- 48" IRON PIN
- 54" IRON PIN
- 60" IRON PIN
- 72" IRON PIN
- 84" IRON PIN
- 96" IRON PIN
- 108" IRON PIN
- 120" IRON PIN
- 144" IRON PIN
- 168" IRON PIN
- 192" IRON PIN
- 216" IRON PIN
- 240" IRON PIN
- 288" IRON PIN
- 336" IRON PIN
- 384" IRON PIN
- 432" IRON PIN
- 480" IRON PIN
- 528" IRON PIN
- 576" IRON PIN
- 624" IRON PIN
- 672" IRON PIN
- 720" IRON PIN
- 768" IRON PIN
- 816" IRON PIN
- 864" IRON PIN
- 912" IRON PIN
- 960" IRON PIN
- 1008" IRON PIN
- 1056" IRON PIN
- 1104" IRON PIN
- 1152" IRON PIN
- 1200" IRON PIN
- 1248" IRON PIN
- 1296" IRON PIN
- 1344" IRON PIN
- 1392" IRON PIN
- 1440" IRON PIN
- 1488" IRON PIN
- 1536" IRON PIN
- 1584" IRON PIN
- 1632" IRON PIN
- 1680" IRON PIN
- 1728" IRON PIN
- 1776" IRON PIN
- 1824" IRON PIN
- 1872" IRON PIN
- 1920" IRON PIN
- 1968" IRON PIN
- 2016" IRON PIN
- 2064" IRON PIN
- 2112" IRON PIN
- 2160" IRON PIN
- 2208" IRON PIN
- 2256" IRON PIN
- 2304" IRON PIN
- 2352" IRON PIN
- 2400" IRON PIN
- 2448" IRON PIN
- 2496" IRON PIN
- 2544" IRON PIN
- 2592" IRON PIN
- 2640" IRON PIN
- 2688" IRON PIN
- 2736" IRON PIN
- 2784" IRON PIN
- 2832" IRON PIN
- 2880" IRON PIN
- 2928" IRON PIN
- 2976" IRON PIN
- 3024" IRON PIN
- 3072" IRON PIN
- 3120" IRON PIN
- 3168" IRON PIN
- 3216" IRON PIN
- 3264" IRON PIN
- 3312" IRON PIN
- 3360" IRON PIN
- 3408" IRON PIN
- 3456" IRON PIN
- 3504" IRON PIN
- 3552" IRON PIN
- 3600" IRON PIN
- 3648" IRON PIN
- 3696" IRON PIN
- 3744" IRON PIN
- 3792" IRON PIN
- 3840" IRON PIN
- 3888" IRON PIN
- 3936" IRON PIN
- 3984" IRON PIN
- 4032" IRON PIN
- 4080" IRON PIN
- 4128" IRON PIN
- 4176" IRON PIN
- 4224" IRON PIN
- 4272" IRON PIN
- 4320" IRON PIN
- 4368" IRON PIN
- 4416" IRON PIN
- 4464" IRON PIN
- 4512" IRON PIN
- 4560" IRON PIN
- 4608" IRON PIN
- 4656" IRON PIN
- 4704" IRON PIN
- 4752" IRON PIN
- 4800" IRON PIN
- 4848" IRON PIN
- 4896" IRON PIN
- 4944" IRON PIN
- 4992" IRON PIN
- 5040" IRON PIN
- 5088" IRON PIN
- 5136" IRON PIN
- 5184" IRON PIN
- 5232" IRON PIN
- 5280" IRON PIN
- 5328" IRON PIN
- 5376" IRON PIN
- 5424" IRON PIN
- 5472" IRON PIN
- 5520" IRON PIN
- 5568" IRON PIN
- 5616" IRON PIN
- 5664" IRON PIN
- 5712" IRON PIN
- 5760" IRON PIN
- 5808" IRON PIN
- 5856" IRON PIN
- 5904" IRON PIN
- 5952" IRON PIN
- 6000" IRON PIN
- 6048" IRON PIN
- 6096" IRON PIN
- 6144" IRON PIN
- 6192" IRON PIN
- 6240" IRON PIN
- 6288" IRON PIN
- 6336" IRON PIN
- 6384" IRON PIN
- 6432" IRON PIN
- 6480" IRON PIN
- 6528" IRON PIN
- 6576" IRON PIN
- 6624" IRON PIN
- 6672" IRON PIN
- 6720" IRON PIN
- 6768" IRON PIN
- 6816" IRON PIN
- 6864" IRON PIN
- 6912" IRON PIN
- 6960" IRON PIN
- 7008" IRON PIN
- 7056" IRON PIN
- 7104" IRON PIN
- 7152" IRON PIN
- 7200" IRON PIN
- 7248" IRON PIN
- 7296" IRON PIN
- 7344" IRON PIN
- 7392" IRON PIN
- 7440" IRON PIN
- 7488" IRON PIN
- 7536" IRON PIN
- 7584" IRON PIN
- 7632" IRON PIN
- 7680" IRON PIN
- 7728" IRON PIN
- 7776" IRON PIN
- 7824" IRON PIN
- 7872" IRON PIN
- 7920" IRON PIN
- 7968" IRON PIN
- 8016" IRON PIN
- 8064" IRON PIN
- 8112" IRON PIN
- 8160" IRON PIN
- 8208" IRON PIN
- 8256" IRON PIN
- 8304" IRON PIN
- 8352" IRON PIN
- 8400" IRON PIN
- 8448" IRON PIN
- 8496" IRON PIN
- 8544" IRON PIN
- 8592" IRON PIN
- 8640" IRON PIN
- 8688" IRON PIN
- 8736" IRON PIN
- 8784" IRON PIN
- 8832" IRON PIN
- 8880" IRON PIN
- 8928" IRON PIN
- 8976" IRON PIN
- 9024" IRON PIN
- 9072" IRON PIN
- 9120" IRON PIN
- 9168" IRON PIN
- 9216" IRON PIN
- 9264" IRON PIN
- 9312" IRON PIN
- 9360" IRON PIN
- 9408" IRON PIN
- 9456" IRON PIN
- 9504" IRON PIN
- 9552" IRON PIN
- 9600" IRON PIN
- 9648" IRON PIN
- 9696" IRON PIN
- 9744" IRON PIN
- 9792" IRON PIN
- 9840" IRON PIN
- 9888" IRON PIN
- 9936" IRON PIN
- 9984" IRON PIN
- 10032" IRON PIN
- 10080" IRON PIN
- 10128" IRON PIN
- 10176" IRON PIN
- 10224" IRON PIN
- 10272" IRON PIN
- 10320" IRON PIN
- 10368" IRON PIN
- 10416" IRON PIN
- 10464" IRON PIN
- 10512" IRON PIN
- 10560" IRON PIN
- 10608" IRON PIN
- 10656" IRON PIN
- 10704" IRON PIN
- 10752" IRON PIN
- 10800" IRON PIN
- 10848" IRON PIN
- 10896" IRON PIN
- 10944" IRON PIN
- 10992" IRON PIN
- 11040" IRON PIN
- 11088" IRON PIN
- 11136" IRON PIN
- 11184" IRON PIN
- 11232" IRON PIN
- 11280" IRON PIN
- 11328" IRON PIN
- 11376" IRON PIN
- 11424" IRON PIN
- 11472" IRON PIN
- 11520" IRON PIN
- 11568" IRON PIN
- 11616" IRON PIN
- 11664" IRON PIN
- 11712" IRON PIN
- 11760" IRON PIN
- 11808" IRON PIN
- 11856" IRON PIN
- 11904" IRON PIN
- 11952" IRON PIN
- 12000" IRON PIN
- 12048" IRON PIN
- 12096" IRON PIN
- 12144" IRON PIN
- 12192" IRON PIN
- 12240" IRON PIN
- 12288" IRON PIN
- 12336" IRON PIN
- 12384" IRON PIN
- 12432" IRON PIN
- 12480" IRON PIN
- 12528" IRON PIN
- 12576" IRON PIN
- 12624" IRON PIN
- 12672" IRON PIN
- 12720" IRON PIN
- 12768" IRON PIN
- 12816" IRON PIN
- 12864" IRON PIN
- 12912" IRON PIN
- 12960" IRON PIN
- 13008" IRON PIN
- 13056" IRON PIN
- 13104" IRON PIN
- 13152" IRON PIN
- 13200" IRON PIN
- 13248" IRON PIN
- 13296" IRON PIN
- 13344" IRON PIN
- 13392" IRON PIN
- 13440" IRON PIN
- 13488" IRON PIN
- 13536" IRON PIN
- 13584" IRON PIN
- 13632" IRON PIN
- 13680" IRON PIN
- 13728" IRON PIN
- 13776" IRON PIN
- 13824" IRON PIN
- 13872" IRON PIN
- 13920" IRON PIN
- 13968" IRON PIN
- 14016" IRON PIN
- 14064" IRON PIN
- 14112" IRON PIN
- 14160" IRON PIN
- 14208" IRON PIN
- 14256" IRON PIN
- 14304" IRON PIN
- 14352" IRON PIN
- 14400" IRON PIN
- 14448" IRON PIN
- 14496" IRON PIN
- 14544" IRON PIN
- 14592" IRON PIN
- 14640" IRON PIN
- 14688" IRON PIN
- 14736" IRON PIN
- 14784" IRON PIN
- 14832" IRON PIN
- 14880" IRON PIN
- 14928" IRON PIN
- 14976" IRON PIN
- 15024" IRON PIN
- 15072" IRON PIN
- 15120" IRON PIN
- 15168" IRON PIN
- 15216" IRON PIN
- 15264" IRON PIN
- 15312" IRON PIN
- 15360" IRON PIN
- 15408" IRON PIN
- 15456" IRON PIN
- 15504" IRON PIN
- 15552" IRON PIN
- 15600" IRON PIN
- 15648" IRON PIN
- 15696" IRON PIN
- 15744" IRON PIN
- 15792" IRON PIN
- 15840" IRON PIN
- 15888" IRON PIN
- 15936" IRON PIN
- 15984" IRON PIN
- 16032" IRON PIN
- 16080" IRON PIN
- 16128" IRON PIN
- 16176" IRON PIN
- 16224" IRON PIN
- 16272" IRON PIN
- 16320" IRON PIN
- 16368" IRON PIN
- 16416" IRON PIN
- 16464" IRON PIN
- 16512" IRON PIN
- 16560" IRON PIN
- 16608" IRON PIN
- 16656" IRON PIN
- 16704" IRON PIN
- 16752" IRON PIN
- 16800" IRON PIN
- 16848" IRON PIN
- 16896" IRON PIN
- 16944" IRON PIN
- 16992" IRON PIN
- 17040" IRON PIN
- 17088" IRON PIN
- 17136" IRON PIN
- 17184" IRON PIN
- 17232" IRON PIN
- 17280" IRON PIN
- 17328" IRON PIN
- 17376" IRON PIN
- 17424" IRON PIN
- 17472" IRON PIN
- 17520" IRON PIN
- 17568" IRON PIN
- 17616" IRON PIN
- 17664" IRON PIN
- 17712" IRON PIN
- 17760" IRON PIN
- 17808" IRON PIN
- 17856" IRON PIN
- 17904" IRON PIN
- 17952" IRON PIN
- 18000" IRON PIN
- 18048" IRON PIN
- 18096" IRON PIN
- 18144" IRON PIN
- 18192" IRON PIN
- 18240" IRON PIN
- 18288" IRON PIN
- 18336" IRON PIN
- 18384" IRON PIN
- 18432" IRON PIN
- 18480" IRON PIN
- 18528" IRON PIN
- 18576" IRON PIN
- 18624" IRON PIN
- 18672" IRON PIN
- 18720" IRON PIN
- 18768" IRON PIN
- 18816" IRON PIN
- 18864" IRON PIN
- 18912" IRON PIN
- 18960" IRON PIN
- 19008" IRON PIN
- 19056" IRON PIN
- 19104" IRON PIN
- 19152" IRON PIN
- 19200" IRON PIN
- 19248" IRON PIN
- 19296" IRON PIN
- 19344" IRON PIN
- 19392" IRON PIN
- 19440" IRON PIN
- 19488" IRON PIN
- 19536" IRON PIN
- 19584" IRON PIN
- 19632" IRON PIN
- 19680" IRON PIN
- 19728" IRON PIN
- 19776" IRON PIN
- 19824" IRON PIN
- 19872" IRON PIN
- 19920" IRON PIN
- 19968" IRON PIN
- 20016" IRON PIN
- 20064" IRON PIN
- 20112" IRON PIN
- 20160" IRON PIN
- 20208" IRON PIN
- 20256" IRON PIN
- 20304" IRON PIN
- 20352" IRON PIN
- 20400" IRON PIN
- 20448" IRON PIN
- 20496" IRON PIN
- 20544" IRON PIN
- 20592" IRON PIN
- 20640" IRON PIN
- 20688" IRON PIN
- 20736" IRON PIN
- 20784" IRON PIN
- 20832" IRON PIN
- 20880" IRON PIN
- 20928" IRON PIN
- 20976" IRON PIN
- 21024" IRON PIN
- 21072" IRON PIN
- 21120" IRON PIN
- 21168" IRON PIN
- 21216" IRON PIN
- 21264" IRON PIN
- 21312" IRON PIN
- 21360" IRON PIN
- 21408" IRON PIN
- 21456" IRON PIN
- 21504" IRON PIN
- 21552" IRON PIN
- 21600" IRON PIN
- 21648" IRON PIN
- 21696" IRON PIN
- 21744" IRON PIN
- 21792" IRON PIN
- 21840" IRON PIN
- 21888" IRON PIN
- 21936" IRON PIN
- 21984" IRON PIN
- 22032" IRON PIN
- 22080" IRON PIN
- 22128" IRON PIN
- 22176" IRON PIN
- 22224" IRON PIN
- 22272" IRON PIN
- 22320" IRON PIN
- 22368" IRON PIN
- 22416" IRON PIN
- 22464" IRON PIN
- 22512" IRON PIN
- 22560" IRON PIN
- 22608" IRON PIN
- 22656" IRON PIN
- 22704" IRON PIN
- 22752" IRON PIN
- 22800" IRON PIN
- 22848" IRON PIN
- 22896" IRON PIN
- 22944" IRON PIN
- 22992" IRON PIN
- 23040" IRON PIN
- 23088" IRON PIN
- 23136" IRON PIN
- 23184" IRON PIN
- 23232" IRON PIN
- 23280" IRON PIN
- 23328" IRON PIN
- 23376" IRON PIN
- 23424" IRON PIN
- 23472" IRON PIN
- 23520" IRON PIN
- 23568" IRON PIN
- 23616" IRON PIN
- 23664" IRON PIN
- 23712" IRON PIN
- 23760" IRON PIN
- 23808" IRON PIN
- 23856" IRON PIN
- 23904" IRON PIN
- 23952" IRON PIN
- 24000" IRON PIN
- 24048" IRON PIN
- 24096" IRON PIN
- 24144" IRON PIN
- 24192" IRON PIN
- 24240" IRON PIN
- 24288" IRON PIN
- 24336" IRON PIN
- 24384" IRON PIN
- 24432" IRON PIN
- 24480" IRON PIN
- 24528" IRON PIN
- 24576" IRON PIN
- 24624" IRON PIN
- 24672" IRON PIN
- 24720" IRON PIN
- 24768" IRON PIN
- 24816" IRON PIN
- 24864" IRON PIN
- 24912" IRON PIN
- 24960" IRON PIN
- 25008" IRON PIN
- 25056" IRON PIN
- 25104" IRON PIN
- 25152" IRON PIN
- 25200" IRON PIN
- 25248" IRON PIN
- 25296" IRON PIN
- 25344" IRON PIN
- 25392" IRON PIN
- 25440" IRON PIN
- 25488" IRON PIN
- 25536" IRON PIN
- 25584" IRON PIN
- 25632" IRON PIN
- 25680" IRON PIN
- 25728" IRON PIN
- 25776" IRON PIN
- 25824" IRON PIN
- 25872" IRON PIN
- 25920" IRON PIN
- 25968" IRON PIN
- 26016" IRON PIN
- 26064" IRON PIN
- 26112" IRON PIN
- 26160" IRON PIN
- 26208" IRON PIN
- 26256" IRON PIN
- 26304" IRON PIN
- 26352" IRON PIN
- 26400" IRON PIN
- 26448" IRON PIN
- 26496" IRON PIN
- 26544" IRON PIN
- 26592" IRON PIN
- 26640" IRON PIN
- 26688" IRON PIN
- 26736" IRON PIN
- 26784" IRON PIN
- 26832" IRON PIN
- 26880" IRON PIN
- 26928" IRON PIN
- 26976" IRON PIN
- 27024" IRON PIN
- 27072" IRON PIN
- 27120" IRON PIN
- 27168" IRON PIN
- 27216" IRON PIN
- 27264" IRON PIN
- 27312" IRON PIN
- 27360" IRON PIN
- 27408" IRON PIN
- 27456" IRON PIN
- 27504" IRON PIN
- 27552" IRON PIN
- 27600" IRON PIN
- 27648" IRON PIN
- 27696" IRON PIN
- 27744" IRON PIN
- 27792" IRON PIN
- 27840" IRON PIN
- 27888" IRON PIN
- 27936" IRON PIN
- 27984" IRON PIN
- 28032" IRON PIN
- 28080" IRON PIN
- 28128" IRON PIN
- 28176" IRON PIN
- 28224" IRON PIN
- 28272" IRON PIN
- 28320" IRON PIN
- 28368" IRON PIN
- 28416" IRON PIN
- 28464" IRON PIN
- 28512" IRON PIN
- 28560" IRON PIN
- 28608" IRON PIN
- 28656" IRON PIN
- 28704" IRON PIN
- 28752" IRON PIN
- 28800" IRON PIN
- 28848" IRON PIN
- 28896" IRON PIN
- 28944" IRON PIN
- 28992" IRON PIN
- 29040" IRON PIN
- 29088" IRON PIN
- 29136" IRON PIN
- 29184" IRON PIN
- 29232" IR